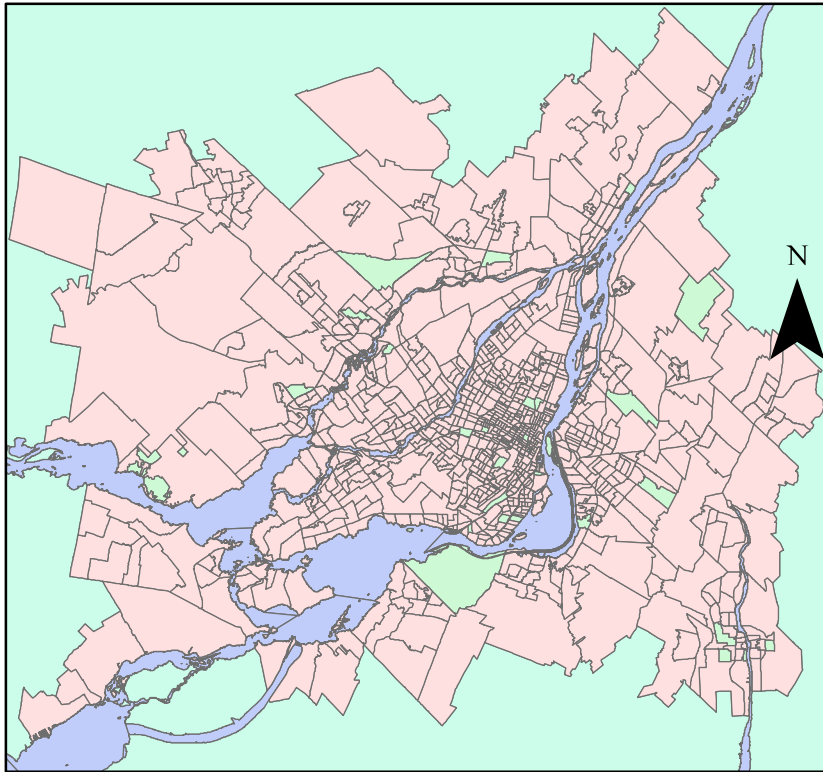


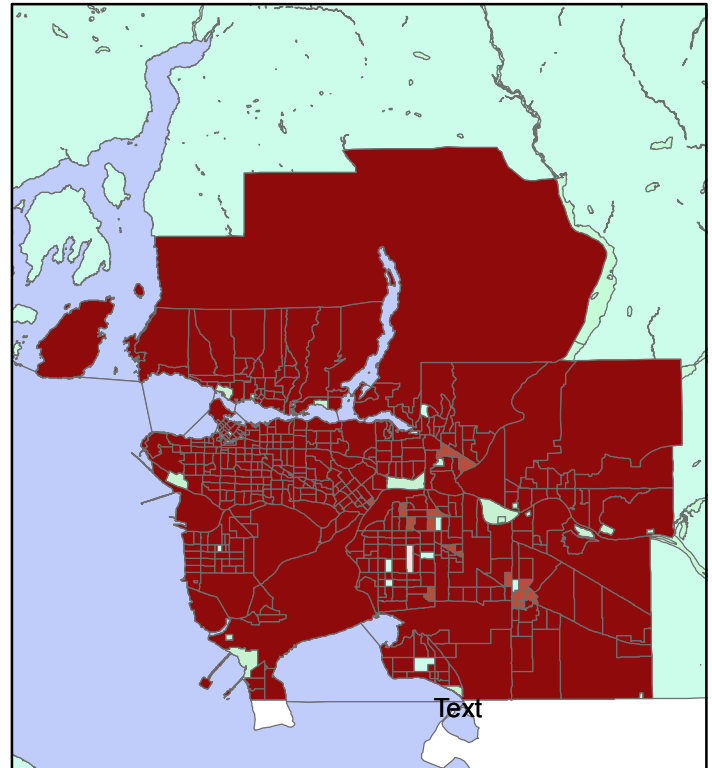
Dwelling Affordability Montreal vs. Metro Vancouver

Montreal Housing



0 12,500 25,000 50,000 Meters

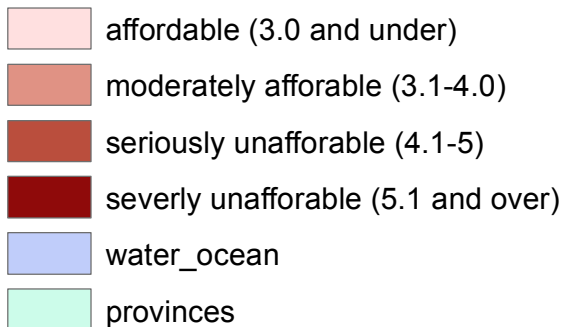
Vancouver Housing



Montreal Dwelling Cost Legend

MontCTjoin

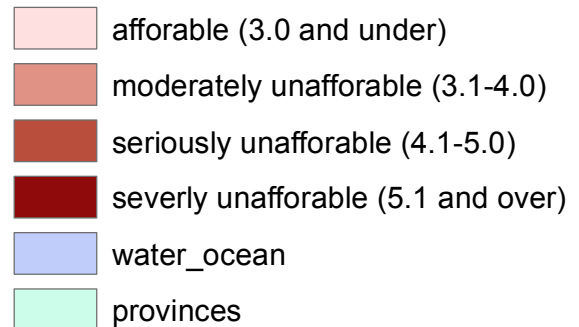
shelter / inc



Vancouver Housing Legend

MVanCTjoin2

shelter / inc



Affordability ratio: Used to compare the affordability of houses between markets. The ratio looks at the house price to income ratio. This is widely used in evaluating housing markets.

By: Madison Simboli 2/25/2019

Data Source: Census Canada Cartographic boundary files <http://data.library.ubc.ca/>

Coordinate System: UTM Zone 10 (Vancouver) NAD_1983_UTM_Zone_18N (Montreal)